

LYONS ANDELLE



RELAX | STROLL | MARVEL

TOURIST MAGAZINE



© Aurélien Pépa



AMFREVILLE-LES-CHAMPS • BACQUEVILLE • BEAUFICEL-EN-LYONS • BOSQUENTIN • BOURG-BEAUDOUIN • CHARLEVAL • DOUVILLE-SUR-ANDELLE • FLEURY-LA-FORÊT • FLEURY-SUR-ANDELLE • FLIPOU • HOUVILLE-EN-VEXIN • LE TRONQUAY • LES HOGUES • LETTEGUVES • LILLY • LISORS • LORLEAU • LYONS-LA-FORÊT • MENESQUEVILLE • PERRIERS-SUR-ANDELLE • PERRUEL • PONT-SAINT-PIERRE • RADEPONT • RENNEVILLE • ROMILLY-SUR-ANDELLE • ROSAY-SUR-LIEURE • TOUFFREVILLE • VAL D'ORGER • VANDRIMARE • VASCOEUIL

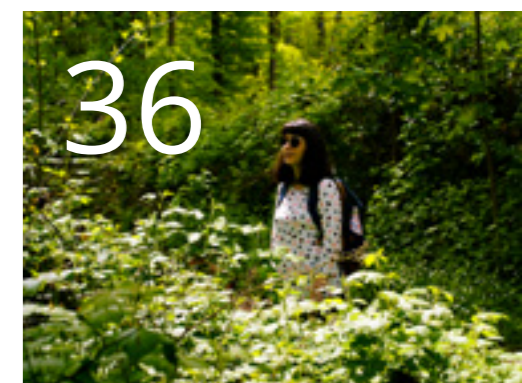
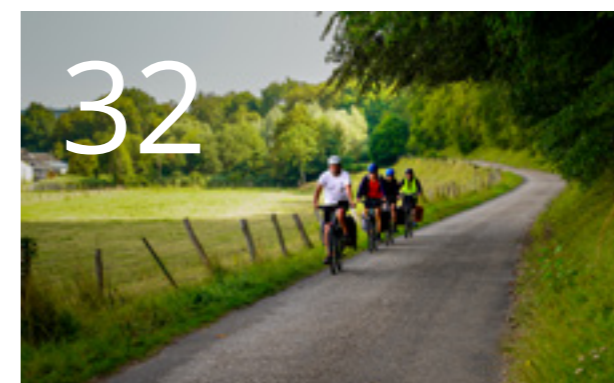
CONTENTS

Flowing streams, forests as far as the eye can see, brick and half-timbered houses, brownfield sites ...
Lyons Andelle is one of those hidden treasures of Normandy.

Here, in the hollow of the valley, time seems to slow down, giving way to idleness and an awakening of the senses.

Both soft and relaxing, vibrant and dynamic, the Lyons Andelle area sets the pace, offering up a fantastic moment for you and your loved ones!

Welcome to Lyons Andelle,
Welcome to our home!



- 04** Once upon a time in Lyons Andelle
- 06** The Essentials
- 16** Highlights
- 20** Gourmet Lyons Andelle
- 26** Some like to take things slow...

- 32** ... others prefer to go off-road
- 36** Green Lyons Andelle
- 40** Lyons Andelle Tourist Office
- 42** Practical information



Once upon a time in Lyons Andelle...

MARKING THE HISTORY OF LYONS ANDELLE

It's not just places that make up the heritage and history of Lyons Andelle – historical or fictional characters have also left their mark.

In Lyons-la-Forêt, artists such as the composer Maurice Ravel, the iconic Art-Deco cabinetmaker Jacques Emile Ruhlmann, the writers Louis Aragon and André Breton and the painters Camille Pissaro and André Masson, among many more, have all opted to stay in this village, attracted by its great beauty and photogenic nature.

LOCAL LEGENDS

At the dawn of a new day, when sheets of mist still envelop the villages, Lyons Andelle is adorned with a mystical atmosphere of its own. Here, between valley and forest, certain sites hide truly strange legends ...

Though time seems to stand still at Mortemer Abbey, the legends are alive and well. The best known even cross borders. But who is she? Mathilde the Empress, granddaughter of William the Conqueror and grandmother of Richard the Lionheart: also known as The White Lady. Some say they have seen her during their visit, dressed in her black gloves, a symbolic bad omen.

It is also said that the spirits of the Benedictine monks, murdered during the French Revolution, stroll through the cellars of the house to drink wine with the taste of blood. So, stay alert to any sneaking shadows and muffled noises – you may not be alone during your visit.

Other legends lead us towards the Andelle, to the Côte des Deux Amants. Though several versions of this tale have been told over the years, the most romantic remains that of Raoul and Mathilde. Raoul de Bonnemare fell in love with Mathilde, a high-ranking lady, daughter of Lord Robert, Baron de Canteloup. The baron agreed to give his daughter's hand to Raoul, only if he managed to climb a formidable hill carrying his would-be lover on his back. Enchanted by her beauty, Raoul accepted and took up the challenge, but it would be at the cost of his own life, and that of his love, consumed by the grief of a lost love

Life has been built along the edge of the meanders of the Andelle since time immemorial. Castles, fortifications and abbeys, but also industries: mills, cotton spinning mills and more. During your walks through Lyons Andelle, you'll quickly discover that the industrial heritage reflects a certain golden age that created the prosperity of certain towns. Among the 30 industrial spinning mills that have marked the area, the former Levavasseur spinning mill remains the most iconic, proudly standing between Pont-Saint-Pierre, Radepont and Douville-sur-Andelle. This architectural jewel, in the English neo-Gothic style, now hides a real showcase of ruins nestled in the heart of nature ...

LAND OF CINEMA

What's sure to strike you as soon as you step foot in Lyons-la-Forêt is the village's picturesque character, like something out of a film. And for good reason ... many adaptations of Flaubert's novel, Madame Bovary, were filmed there: with Jean Renoir in 1933, Claude Chabrol in 1991 and Anne Fontaine in 2014 for her film Gemma Bovary.

It is even said that while filming was underway for Chabrol's film, the inhabitants, who served as extras in the film, and the main actors spent so much time together that the village of Lyons-la-Forêt began to be known as BovaryLand! And there's much more we could tell you about this ...

The must-see



01 Château de Vascoeuil and Gardens

Discover the Château de Vascoeuil and its gardens. An arts centre with the air of yesteryear, between its medieval tower and its period dovecote. It is here, in these old buildings and these gardens – both French and English in style – that the place welcomes contemporary artists.

8 rue Jules Michelet - 27910 Vascoeuil
+33 (0)2 35 23 62 35
www.chateauvascoeuil.com



02 Mortemer Abbey

Visiting Mortemer Abbey is a journey through time. In this walk through the heart of the 12th century, let yourself be carried away by the beauty, legends and atmosphere of the place. In spring and summer, extend your experience by bringing a picnic for lunch.

Lieu dit Mortemer - 27440 Lisors
+33 (0)6 71 75 48 84
www.abbaye-de-mortemer.fr



03 Notre-Dame de Fontaine Guérard Abbey

Let yourself be swept away by the magic of the place! This Cistercian women's abbey, which time seems to have forgotten, is a jewel of Gothic architecture. In addition to the recurring events organised by the Abbey, its romantic ruins and legendary gardens are sure to amaze.

CD 714 - 27380 Radepont
+33 (0)6 86 08 04 67
www.abbayefontainequerard.fr



04 Bois-Guilbert Garden of Sculptures

Treat yourself to a stopover in the Bois-Guilbert garden, dotted with sculptures by the artist Jean-Marc de Pas. A place of poetry where art can be found at the heart of nature. Here, let yourself stroll among the works and hand yourself over to the reverie and artistic emotion of the place

1108 route d'Héronnelles - 76750 Bois-Guilbert
+33 (0)2 35 34 86 56
www.lejardindessculptures.com



05 Château de Martainville

At the Château de Martainville, immerse yourself in the heart of Norman customs and arts. A true ode to Normandy, this castle – dating from the Renaissance – will transport you back in time. Its period reconstructions and themed workshops offer a unique experience to enjoy with family.

RN31 - 76116 Martainville-Epreville
+33 (0)2 35 23 44 70
www.chateaudemartainville.fr



06 The Rome Farm Museum

Here, more than 2,000 objects of Norman folk art, instruments and tools offer visitors a journey into the rural world of years and centuries gone by. At the end of your visit, enjoy a homemade crêpe accompanied by apple juice or cider from the local orchard.

3 rue de Rome - 27480 Bézu-la-Forêt
+33 (0)2 32 49 66 22
www.fermederome.fr



LYONS-LA-FORÊT, BETWEEN AUTHENTICITY AND IDLENESS

It's not just a legend and it's not hearsay – and you'll quickly realise it for yourself ... Lyons-la-Forêt is a timeless setting in the middle of a 10,700-hectare forest.

Here, in this ancient Gallo-Roman village, all is beauty ... peace and pleasure, as Beaudelaire might have added. And so it is only natural that this small Norman village of around 700 inhabitants has been recognised as one of the most beautiful villages in France since 1996.

To visit Lyons-la-Forêt, you will need ...

*To lose yourself in its ancient streets with their Norman charm,
To lift your head and admire its brick and half-timbered houses from the 17th century,
To get off the beaten path and discover the Lieure,
To venture behind the shop windows to discover its flea markets, starred hotels and restaurants and all their many flavours,
To take your time and appreciate the sweetness of life that reigns supreme in the centre of this village.*

In short, in Lyons-la-Forêt, you must live in the now and take your time.



The covered market

More than a central element, the Lyons-la-Forêt La Halle market hall forms part of this village's identity. 13 metres high and 23 metres long, La Halle is a 100% "made in Lyons forest" construction. Its oak pillars and chestnut wood frame were taken directly from the neighbouring forest in the 17th century.

Historically, it is under the La Halle – listed as a historical monument – that the village comes to life, especially on market days. Where visitors would once find tapestries, horse saddles or even animals, today it is a more traditional market that awaits shoppers on Thursdays, Saturdays and Sunday mornings. La Halle was once, however, witness to a very unusual market – that of the shooting of Madame Bovary by Claude Chabrol in 1991.

Every June, a new covered market appears for the Flower Festival. That of the long-awaited summer.

The bailiwick room*

Push the door of the town hall of Lyons-la-Forêt, climb the few period steps and discover the bailiwick room. This is where disputes were once held to decide on property issues, judge crimes or solve tax problems.

Today, the bailiwick room, listed as a historical monument, hosts happier events – like weddings. But past memories of this room, dating back to the Old Regime, can still be felt today. Like these fleur-de-lis hangings, recreated in 1830, this painting by Isaac de Benserade, member of the Académie Française who taught Racine, La Fontaine and Corneille, and even these wooden chairs with the effigy of Saint-Denis, patron saint of Lyons-la-Forêt.

* to discover during the opening hours of the town hall or during guided tours of the Tourist Office.



The Three Mills

At the crossroads of the Rue du Bout de Bas and the Rue de la Rouge Mare, head down to banks of the Lieure and let yourself be enchanted by the Square des Bénédictines, also known as the Square des Trois Moulins, or the Square of the Three Mills.

In the shade of the weeping willows, amid a bucolic and even romantic atmosphere, it's hard to imagine that three royal mills once stood here in the 14th century, used in particular to grind the grains of wheat and oats that were stored in the attic of the La Halle market hall. A few centuries later, in 1894, these mills brought electricity to the village.

Follow the gentle sound of waterfall and approach the watercourse to see the remains of one of the three mills.



IDEAS FOR A WEEK-END

Looking for a disconnected weekend at the heart of one of France's Most Beautiful Villages and the largest beech grove in Normandy? We offer exactly that! From May to September, come for a 2- to 3-day weekend to share a moment as a couple or among friends.



FRIDAY

Start your stay in the morning with the Abbey Notre-Dame de Fontaine-Guérard. Built along the Andelle river, this old Cistercian women's abbey transports you into a timeless environment. A historical site founded in 1190, this abbey is a work of art of the Anglo-Norman gothic architecture. A mystical link too... Its miraculous source, not far from an intertwined pine and chestnut tree, is a symbol of a Norman legend known as the "Two Lovers." Discover the site while also enjoying the monastic gardens, and less than 100 metres away, pause for a photo of the Levasseur mill: the ruins of this XIX industrial cathedral are unique in Europe.

For lunch, go to the *L'Évidence* restaurant in Romilly-sur-Andelle. We recommend testing the specials' menu, available on week days. You will enjoy their tasty, refined homemade cuisine. We recommend booking in advance.

Continue your day at the heart of nature. Discover the largest state-owned forest in Normandy with an 11-km hike of the Boucle de la Jacassière. The start and parking point is next to the church in Touffreville with a nice panorama over the village.

At the end of the day, return to the Andelle river, this time to blend in with a festive and friendly universe. At the *Guinguette Insulaire* (Island café), taste beer produced on site by the local brewery built on the island. Many other activities and local produce are there for you to accompany your dance moves, games of pétanque or dart matches.

SATURDAY

On arrival in Lyons-la-Forêt in the morning, visit its market under the centuries-old covered market. Local producers offer fresh season produce direct from the farm. For those who prefer heritage and history, a tour of Lyons-la-Forêt will take you through time and show you the mysteries of this village.*

By strolling through the narrow streets of Lyons, you will be delighted by its historical monuments, half-timbered medieval houses, but also by its shops. Lyons-la-Forêt is also the host to a few flea markets and artist workshops (see pages 27 and 28).

For lunch, two good addresses await you at the heart of the village of Lyons. *Le restaurant de la Halle* and *le café du Commerce* offer traditional and generous cuisine. In sunny weather, both will welcome you on their terraces with a view of the half-timbered houses and the majestic covered market. A genuine post card environment!

In the afternoon, go explore the area. A few kilometres away from Lyons, the Vasœuil castle is an open sky museum. Its garden is full of sculptures of major names in contemporary art such as Braque, Cocteau, Dali, Vazarely...

* Guided tours are organised every Thursday and Saturday in July and August, on Sundays in September and independently throughout the year. Take a map at the Tourist office.

Built in a beautiful 5-hectare park, the castle also hosts an annual exhibition. In 2024, Narrative Figuration is the highlight with the French painter Gérard Guyomard.

Back in Lyons-la-Forêt, go to the valley of the Lévrière river to shop for antiques at *Dumont Antiquité* in Mainneville. You will find many an object of curiosity in this shop, established more than 35 years ago. At the end of the day, extend your trip by another 4 km towards the village of Martagny to discover its photo festival in July and August. Before leaving, have a break at *Vignes Normandes* for a drink in this former school converted into a wine cellar and restaurant. On the menu: wine tasting, appetiser boards...

SUNDAY

Start the day gently at the *Petit Lyons*. Thomas and Mélanie will welcome you for a Sunday brunch.

For a breath of fresh air in the forest, *Loc E Vélo* offers mountain bikes or electrically assisted bicycles for rent. Visit the magnificent state forest of Lyons, with little effort and without getting lost by using a GPS with built-in forest and touristic tours.

If you'd rather relax, the Spa La Licorne is ideal for unwinding. Programme: well-being area, indoor/outdoor swimming pool, steam room, sauna. You can also enjoy a treatment or a massage in a tree cabin to be close to the forest.



The Château de Martainville and its themed workshops

Push open the doors of the Château de Martainville and invite your child to travel back in time. Discover the traditions and arts of Normandy at your own pace, accompanied by a guide or during a workshop*.

RN31 - 76116 Martainville
+33 (0)2 35 23 44 70 / www.chateaudemartainville.fr

The Tourist Office treasure hunts

Complete your visit to Lyons-la-Forêt with the "A village in the woods" treasure hunt offered by the Tourist Office. An experience to be enjoyed with family, discovering one of the most beautiful villages in France in a fun and exciting way

Mélie-Mélo workshops with Mélanie

DIY, sewing, cooking, painting and more. Mélanie is full of creative ideas to keep adults and children busy. Check her calendar to book an activity that's sure to delight.

3 rue Bernard Buffet, Hameau de Saint-Crespin - 27480 Lorleau
+33 (0)6 99 09 27 47 / www.lateliermeliemelo.fr

The Château de Vascoeuil and its guide

Who among us has never dreamt of setting off on an adventure like a knight? The Château de Vascoeuil and its gardens are an unlimited playground for your children's imagination. The added bonus? A playbook to accompany your child in their visit, from age 3 and up.

8 rue Jules Michelet - 27910 Vascoeuil
+33 (0)2 35 23 62 35 / www.chateauvascoeuil.com

Forest House of the Hogues

Hidden in a village at the heart of the forest, a funny house welcomes you. Animated by the Haugr association, it offers manual, creative, artistic and playful activities for the entire family.*

2 rue des Écoles - 27910 Les Hogues
<http://haugr-des-hogues-en-lyons.over-blog.com/>

Bonnemare Castle treasure hunt

Wednesday afternoons and every day during school holidays, upon booking, take your children to find the treasure hidden in the gardens of the Bonnemare Castle.*

990 route de Bacqueville - 27380 Radepont
+33 (0)6 65 91 39 68 / www.bonnemare.com

The Pont-Saint-Pierre swimming pool

Looking for an activity for rainy days or to cool off in hot weather? Enjoy the Pont-Saint-Pierre swimming pool and its many activities: play pool, paddling pool, steam room, sauna or sports pool – there's something for all the family.

2 rue du Collège - 27360 Pont-Saint-Pierre
+33 (0)2 32 49 70 90 / www.sidealpiscine.com

* Browse the schedule to discover the activities organised for the younger public.

#LYONSANDELLETOURISME



©Max Coquard - Bestjobers - Eure Tourisme

**LYONS
ANDELLE
WITH THE
FAMILY**

10 SHOPPING IDEAS MADE IN LYONS ANDELLE



Products from Perruel fish farm

At the heart of the Andelle valley, the Perruel fish farm welcomes you all year round to discover its operation and taste its range of products based on salmon trout: rillettes, soups, trout fillets... Leave with a selection of fresh high quality products.

698 route des Cables - 27910 Perruel
+33 (0)2 32 49 18 17
www.facebook.com/pisciculturedeperruel/



Insular beer

At Lyons Andelle, we also brew our own beer*! Give in to one of our many ranges of beer offered by the Insular Brewery.

La Remise Paviot - 27380 Charleval
+33 (0)6 27 53 55 25
www.brasserie-insulaire.com



A souvenir at the Tourist Office

Do not forget when at Lyons-la-Forêt to visit the Tourist Office. You will leave with good advice and souvenirs of your stay.

25 bis place Benserade - 27480 Lyons-la-Forêt
+33 (0)2 32 49 31 65
www.lyons-andelle-tourisme.com



A unique object found at the flea market

Whether a compulsive collector or amateur of unique objects, Lyons Andelle features antique outlets where you can find small precious decoration items. A unique and environmental gift to bring back home to never forget your stay with us.

(Discover our best addresses p.28)



Rhubarb fizz

Cider, calvados* and local aperitif drinks... The Ferme du Haut Fayel offers unique and 100% made in Normandy beverages, like this rhubarb fizz.

Produce from the Ferme du Haut Fayel is offered for sale on their farm and at the Tourist Office.

5 route de Bezancourt 27480 Bosquentin
+33 (0)6 10 49 37 76
www.facebook.com/domaineduhautfayel/



Yoghurt from the 'Ferme des Peupliers'

Taste our prize-winning yoghurt, found on the tables of the most famous hotels! The Ferme des Peupliers offers dairy products based on the high quality milk of their cows, with an artisan twist.

4 rue des Peupliers - 27380 Flipou
+33 (0)2 32 49 72 32
www.fermedespeupliers.fr



Cider* and apple juice

You will find many orchards in Lyons Andelle, and you should take advantage of your stay to stock up on a few bottles from the Vergers d'Orgeville or Pressoir d'Or orchards.

Les Vergers d'Orgeville
5 chemin des Prés-Orgeville- 27380 Flipou
+33 (0)2 32 49 72 31
www.vergers-d-orgeville.com

Le Pressoir d'Or
57 route des Andelys - 27150 Frenelles-en-Vexin
+33 (0)2 32 69 41 25
www.pressoirdor.com



A souvenir from Château de Vascoeuil

Let yourself be surprised by the souvenir shop at the Vascoeuil castle. Stationary, decoration,... you will find an original idea to bring back in your suitcase.

8 rue Jules Michelet - 27910 Vascoeuil
+33 (0)2 35 23 62 35
www.chateauvascoeuil.com



Artisan creation at Les Jolies Dames

A shop selling creations, artisan gifts, natural stones, essential oils... Find a gift to please someone or yourself at Les Jolies Dames.

7 place Benserade 27480 Lyons-la-Forêt
+33 (0)2 32 48 54 20
www.facebook.com/lesjoliesdames/

A knife from the Forges de l'Andelle

In Ménesqueville, Brice and Arnaud forge knives and small ironwork. Push the door of their workshop to discover their know-how and works.

11 route de Mortemer - 27850 Ménesqueville
+33 (0)6 62 44 38 39
www.lesforgesdelandelle.com





THE HIGH LIGHTS

An immense state forest, green valleys scattered with small villages crossed by rivers... Everything is here to entice you to reconnect with nature. It is in spring and summer that you will be able to best appreciate the exceptional flora and its unique colours: rare violets, cathedral beech grove, wild orchids or still spring hyacinths will follow you on your hikes.

At the heart of this nature, take a lunch break in a dream environment with one of the many picnic tables and enjoy the surrounding softness to organize a fishing trip in one of the territory's rivers.

Discovering Lyons Andelle also means meeting its actors. Our producers and farmers invite you in their farms where they sell local produce.

Whether seeking serenity or thrills, Lyons Andelle will be able to surprise you: a yoga session at the arboretum or a horseback ride at the heart of the Lyons forest, you will leave with unique souvenirs.

The territory also vibrates with its many events organised from May to September: The Medieval festival at the Notre-Dame Abbey of Fontaine-Guérard and Mortemer Abbey, The Festival of the World's Trees and Music, organised by the Haugr association at the Lyons Arboretum or the resident artists at the Bonnemare castle... Also rediscover the heritage of the past during a Cluedo, a one-woman show or a musical evening at the Vascoeuil castle, the night of the museums or the music festival at the Martainville castle.

Finally, summer is the best of times to enjoy long sunny days. Relax on the banks of the Andelle, in a bar or a bed & breakfast, enjoy the smooth and friendly long summer nights.

And then there is autumn and winter, two seasons calling for bliss and warmth, and during which Lyons Andelle will continue to marvel you.

From late September, when the leaves turn to their autumn colours and morning mist covers the valley, it is a unique environment moving in for a few months. It is a time for you to relax and reconnect.

Get a breath of fresh air in the state forest of Lyons. You might even hear deer squalling. Turn to basic activities, such as mushroom picking. Marvel in front of the icy mornings covering the Andelle, a unique spectacle. Have a gourmet break next to the fireplace in our restaurants. Take some time for yourself and in a spa's cocoon.

Autumn also offers highlights: the European Heritage Days with the Les Amis de Lyons, the night at the Bonnemare castles, the Arts and crafts exhibition in the Abbey of Notre-Dame de Fontaine-Guérard, the Magie des Orchidées show at the Vascoeuil castle or a guided tour by the Haugr association.

Enjoy the Christmas magic in the month of December. Every week-end, the seasonal magic kicks in through many animations proposed here and there: arts and crafts markets and their mulled wine, illuminated houses, seasonal events, such as the enchanted Christmas at the Bonnemare castle, the Martainville Christmas market, the goblins at the Abbey of Notre-Dame de Fontaine-Guérard...

In December, come live the magic at Lyons Andelle!

BUT ALSO... EXHIBITIONS 2024

27.04 to 27.10
Gérard Guyomard: 60 years of painting, Vascoeuil castle

01.04 to 03.11
Saint-Exupéry a commander, aviator and poet, Bois-Guilbert garden

22.06 to 01.09
7th photo festival of Martagny, Martagny

01.07 to 31.08
Les Hogues in postcards, Les Hogues forest house

The schedule is available
on the website of the Lyons Andelle
Tourist Office



Lyons Andelle mon Amour



Christophe Denize
DOMAINE DU HAUT FAYEL • BOSQUENTIN

'An apple a day keeps the doctor away'. Apples are often ingredients used to produce beverages to be shared!

Whether for the aperitif or an after-dinner drink, choose local produce, with or without alcohol. Talking of apples, we met with Christophe Denize, 4th generation of producers, at the Domaine du Haut-Fayel, in Bosquentin.

What products do you offer at the Domaine du Haut-Fayel?

We offer a range of six products: apple juice, brandy, calvados, ciders... all our beverages are unique and 100% Norman. We also produce local aperitif drinks based on apples, mixed with blackcurrant, cinnamon and soon chocolate. An innovative way to rediscover the apple.

What is your flagship product

Calvados! Beyond the product, it is a genuine passion which requires patience. We produce calvados between 8 and 18 years of age. The oldest ones come from plantations initiated by my father, that you can find under the 'La réserve de Pierre' brand, in a tribute to his work.

Does your orchard apply a sustainable process?

Our orchards have been labelled organic since 2013. This means that we do not spray any pesticides on our apple trees. Over the last year, we have also worked with *La Mare aux Abeilles*, a bee keeper located in Suzay, by integrating beehives into our orchards. This enhances the blossoming of our trees, hence more fruit, and therefore more apples. We also intend to integrate flowers into the orchard to increase the presence of auxiliary insects, such as ladybugs, to preserve biodiversity.

An in-house cocktail to share with us?

For a local aperitif, here is an idea for a recipe so that you can appreciate our products differently:

- 1 measure of Calvados from the Domaine du Haut-Fayel
- 5 measures of rhubarb fizz from the Domaine du Haut-Fayel
- 1/2 measure of raspberry cordial

Domaine du Haut-Fayel

5 route de Bézancourt - 27480 Bosquentin
+33 (0)6 10 49 37 76
f domaineduhautfayel/



Alcohol can damage your health, please drink moderately



Lyons Andelle gourmet

LOCAL MARKETS

LYONS-LA-FORÊT
Thursday morning
Saturday morning
Sunday morning

PONT-SAINT-PIERRE
Saturday morning

IN THE AREA

ÉTRÉPAGNY
Wednesday morning

GISORS
Friday morning
Sunday morning

GOURNAY-EN-BRAY
Tuesday morning
Friday morning

LA NEUVILLE-CHANT-D'OISEL
Saturday morning

LES ANDELYS
Saturday morning

LOUVIERS
Saturday morning

PÎTRES
Friday morning

PONT-DE-L'ARCHE
Sunday morning

RY
Saturday morning

VERNON
Wednesday morning
Saturday all day



© Max Coquard, Bestjobbers

EATING OUT...

IN ONE OF THE MOST BEAUTIFUL VILLAGES OF FRANCE



La Licorne Royale*

27 place Benserade
27480 Lyons-la-Forêt
+33 (0)2 32 48 24 24
www.hotel-licorne.com

La Halle

6 place Benserade
27480 Lyons-la-Forêt
+33 (0)2 32 49 49 92
www.restaurant-lahalle.fr

Le Bistrot du Grand Cerf

30/31 place Benserade
27480 Lyons-la-Forêt
+33 (0)2 32 49 50 50
www.grandcerf.fr

Le Petit Lyons

1 rue froide
27480 Lyons-la-Forêt
+33 (0)2 32 49 61 71

Le Café du Commerce

19 place Benserade
27480 Lyons-la-Forêt
+33 (0)2 32 48 58 98
www.restaurant-lahalle.fr

ON THE GO

La Guinguette Insulaire

La Remise Paviot - 27380 Charleval
+33 (0)6 27 53 55 25
www.brasserie-insulaire.com

Vignes Normandes

4 rue de l'Église
27150 Martagny
+33 (0)2 32 15 27 49
www.vignesnormandes.fr

Le Tacot Burger foodtruck

Call for the schedule:
+33 (07 81 41 87 27 / www.letacotburger.com)

A selection of tables for your picnics

- Rue de l'Essart Mador near the Chapelle Saint Jean-Baptiste, Lyons-la-Forêt
- Place de l'Église, Fleury-la-Forêt
- At the intersection of Rue de la Forêt and Sente des Jardins, Rosay-sur-Lieure
- Les prés de Vascoeuil, Vascoeuil
- Place de l'Église, Beauficel-en-Lyons
- Carrefour de Beaunay, Charleval
- Au bord de l'Andelle, Perriers-sur-Andelle (rue de l'Église/ rue de l'Andelle)



IN THE VALLEY OF THE ANDELLE

L'Auberge de l'Andelle

27 Grande Rue
27360 Pont-Saint-Pierre
+33 (0)2 32 49 70 18
www.aubergedelandelle.com

La Potinière

4 place de la République
27380 Fleury-sur-Andelle
+33 (0)2 32 49 00 55
www.la-potinierefleury.eatbu.com

L'Evidence

47 rue Saint-Georges
27610 Romilly-sur-Andelle
+33 (0)2 32 68 20 00
www.levidence27610.fr

La Bro'cantine

54 Grande Rue
27380 Charleval
+33 (0)7 69 35 04 93
www.la-brocantine-charleval.eatbu.com

ON THE FRINGE OF THE FOREST

L'Unique

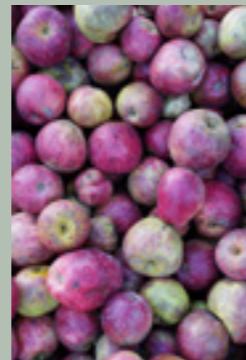
1 rue du Général de Gaulle
27850 Ménesqueville
+33 (0)2 32 49 06 21
www.hotelrestaurantunique.com

L'Auberge de la Forêt

55 rue Saint-Adrien
27150 Morgny
+33 (0)2 32 27 27 37
www.aubergedelaforet-morgny.fr

THE APPLE

Is a typical Norman product and Lyons Andelle is where you can find it! The apple is a delight for our tastebuds as a snack, pies, deserts... but not only. Blossoming orchards in spring, picking apples and pressing of harvests at the beginning of autumn, are many highlights that animate the cider-making activity all year round.



Le Pressoir d'Or

Taste the regularly prized classical or rosé cider, ice cider, apple juice, Pétill'pomme products from the Pressoir d'or. This family business offers a range of products made with the organic apples from their orchards.

57 route des Andelys
27150 Frenelles-en-Vexin
+33 (0)2 32 69 41 25
www.pressoirdor.com

La Ferme du Haut Fayel

Looking for drinks with a unique taste and 100% made in Normandy? You are at the right place! La Ferme du Haut Fayel produces cider and local aperitif drinks and also sells calvados aged several years in oak casks to give it an exceptional taste and quality.

5 route de Bezancourt
27480 Bosquentin
+33 (0)6 10 49 37 76

Les Vergers d'Orgeville

Discover the orchards of the Béguin family and their cider-producing farm offering high quality regularly prized farm cider appreciated by cider aficionados. A definite plus: during your visit you can discover how cider is produced and chat with the producer.

5 chemin des Prés-Orgeville
27380 Flipou
+33 (0)2 32 49 72 31 / +33 (0)6 13 50 67 14
www.vergers-d-orgeville.com

DIRECT SALES AT THE FARM

Chez Laure et Paul

Homemade pork butchery, pork meat, limousin beef, farmed poultry... *Chez Laure et Paul* very short circuit consumption, from the farm to the plate. Enjoy their broad selection of quality products sold directly on site.

10 rue de l'Église - 27440 Lisors
+33 (0)2 32 49 11 23
www.chezlaureetpaul.com



La Ferme des Peupliers

You cannot leave Lyons Andelle without tasting yoghurt from *La Ferme des Peupliers*, 'so good' as reported by David Beckham. And one understands why their products are prized regularly.

4 rue des Peupliers - 27380 Flipou
+33 (0)2 32 49 72 32
www.fermedespeupliers.fr



Les Légumes Fabert

have been embellishing our plates for more than 50 years. Nearly 70 seasonal varieties are available in retail sales directly at the farm. Daily picking of vegetables ensures they are fresh, of high quality and tasteful!

943 rue de la Libération - 27610 Romilly-sur-Andelle
+33 (0)2 32 49 75 87
[Legumesfabert/](https://www.instagram.com/Legumesfabert/)

LOCAL PRODUCT SHOPS

La boutique des Saveurs

Visit this local produce grocery: dairy, ice cream from local farms, meat, fruit and vegetables, wine and spirits... Everything you need to satisfy all tastes!

5 place Benserade - 27480 Lyons-la-Forêt
+33 (0)2 32 49 16 60

Graine des Champs

Organic soup, homemade meals, artisan pasta, pork butchery, dairy products... *Graine des Champs* offers a broad range of local produce available for sale.

20 rue de la Gare - 27910 Vascoeuil
+33 (0)2 32 91 19 72

Lyons Andelle mon Amour



Arnaud Duchesne and Brice Dolay

LES FORGES DE L'ANDELLE • MÉNESQUEVILLE

Ménesqueville hosts a workshop like no other! Les Forges de l'Andelle installed their anvil there back in 2020. Two men are behind this adventure: Brice Dolay and Arnaud Duchesne, two professional artisan blacksmiths-cutlers after professional reconversion. A genuine passion, a taste for proper work, contagious good humour, that is what awaits you when you enter their workshop. Meet with two modern day blacksmiths!

What do you create at Forges de l'Andelle?

Anything that can be forged. This includes small iron pieces, gates, security grids and knives: fixed knives, hunter's knives, kitchen knives, damas, piémont (friction folding) and knives with mechanisms.

What is the manufacturing process?

It starts with a design. We then use steel scrap, or steel mill steel, which we work hot, then hammer it to give it the thickness and shape we need. We then apply a first thermal treatment, which is detention. This releases the stress in the steel of everything it could have endured during the forging stage. Then there is a second stage on the machines. We then create the knife's concave grinding, i.e. the part leading to the cutting edge. Then we apply the actual thermal treatment, which makes the knife sturdy and strong.

This allows the blade to be hit without breaking. Finally, we refine our concave grinding abrasion on the machines, to finish with polishing and sharpening.

What is your favourite place in the area?

The Abbey of Notre-Dame de Fontaine-Guérard and its surroundings make up a site with a truly beautiful universe. It is a totally magical place with its medicinal gardens and incredible sculpted framework. More particularly we like forging inside the heart of the abbey during events.

Where do you find your inspiration?

From our clients! We have many clients, interns, with the Wecandoo workshops, arriving with rather crazy projects. Every time they push us further into the performance of our profession. Ultimately, they make us progress and challenge us on all projects.

Brice and Arnaud welcome you in Ménesqueville for a tour of their workshop or to discover their works in the shop. They also organise training sessions, over one or two days, to build a knife its holster. Visit their website for more details.

Les Forges de l'Andelle

11 route de Mortemer - 27850 Ménesqueville
+33 (0)6 62 44 38 39
www.lesforgesdelandelle.com





Some like to take things slow...

A stay in Lyons Andelle comes with a certain 'art de vivre'. Take the time to enjoy things, stroll in the streets of the villages and make time for yourself...

Our territory is full of simple experiences to awaken our senses and reconnect you to the essential: explore antique shops, discover art galleries, taste local products, ride bicycles, relax in the hotels and B&Bs or even go fishing.

You can then breathe in, breathe out and take the opportunity of your stay with us to reconnect with the essentials and rediscover the pleasure of the present instant.

Flopy Céramique*

Floriane, who is a ceramist fond of literature, combines the world of books and imagination with the earth, giving life to limestone creatures and animals. She shares here universe during sessions of training and initiation to the wheel or modelling within her workshop.

108 chemin de la Côte Verte 27380 Radepont
+33 (0)6 51 02 46 79

L'Atelier d'Alix

A painter artist and illustrator, Alix welcomes you in her workshop-boutique. She sells original works, limited series printouts and other creations. Alix also animates paint workshops for children and adults in small groups at the gallery or at home!

12 rue de l'Hôtel de Ville 27480 Lyons-la-Forêt
+33 (0)6 32 04 58 64

Premier matin

Needles, thread, embroideries, fabric: it is the universe in which Chrytelle has grown up. In her workshop she designs and makes textile articles for the home (customized cushions, curtains, tableware, lampshades...).

1 route du Bosquentin 27480 Fleury-la-Forêt
+33 (0)2 32 49 15 67

Sylviane Magnan Stalin*

Sylviane has been restoring seats with old techniques for 45 years. She reseats and canes chairs with the traditional method using noble materials (rye straw, spun rattan cane).

2 route de Morgny 27480 Beauficel-en-Lyons
+33 (0)2 32 49 63 94

Véronique Carpentier*

A painter artist whose work is between surrealism, symbolism and fantasy, Véronique alternates between workshop tasks and work for shops, local authorities or private individuals by offering the creation of mural, signage and portrait paint.

11 route de Grainville 27380 Val d'Orger
+33 (0)6 87 57 96 10

Étienne Richy*

Between the advocates of imitation and the partisans of imagination, Étienne is clearly on the 'communion with nature' side. Watercolour artist architect, he draws and water colours your property with his garden.

2 rue d'Enfer 27480 Lyons-la-Forêt
+33 (0)6 81 57 97 28

*visit only upon appointment

THE ARTIST GALLERIES

Open your eyes! Lyons Andelle hides many small nuggets to be admired, photographed... or meet, such as these artists and artisans, who open the doors of their galleries and art to take you into their universes.





THE ANTI-QUES

If there is one specificity of Lyons Andelle, it is the sweetness of life. The art of slow life which is based on simple pleasures: a good restaurant, a walk in the forest, wandering along the Andelle or even taking time to explore the antique shops. And in this respect, Lyons Andelle offers unique addresses. Come with us as we share our favorites.

Jan Brocante
8 place Isaac Benserade
27480 Lyons-la-Forêt
+33 (0)6 86 80 95 31

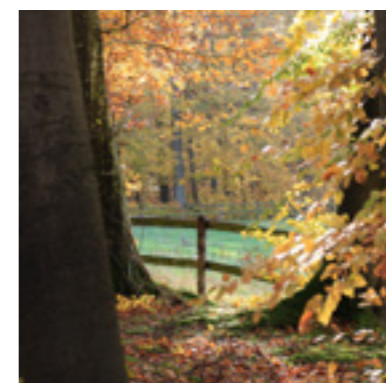
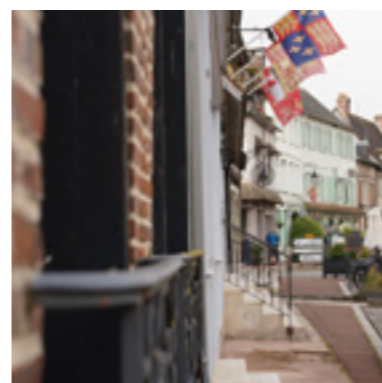
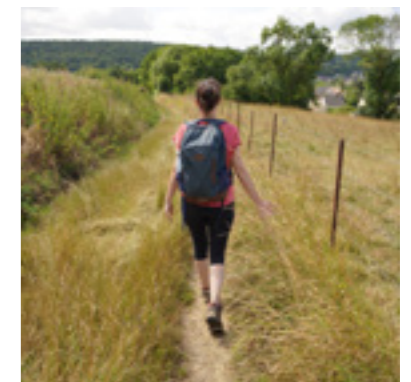
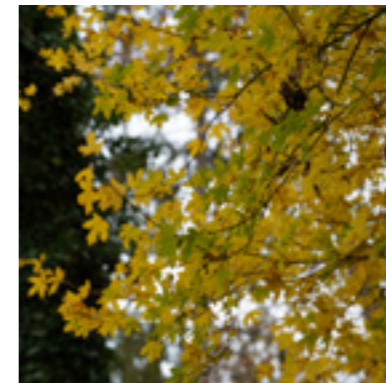
L'Empreinte Décoration
28 place Isaac Benserade
27480 Lyons-la-Forêt
+33 (0) 2 32 48 23 01

Ressourcerie Addie
9001 rue de Courcy
27380 Fleury-sur-Andelle
+33 (0)2 32 48 64 61

Dumont Antiquité
5 place du marché
27150 Mainneville
+33 (0)2 32 27 19 71



#LYONSANDELLETOURISME



Lyons Andelle mon Amour



Michèle and Christian

ÉCURIE DE LA FORÊT DE LYONS • LA FEUILLIE

The *Écurie de la forêt de Lyons* is above all a story of love: Michèle and Christian's passion for horses, but also for the forest of Lyons they fell in love with 6 years ago. The couple moved into an old brayonne farm. With their stables, bed and breakfast and guest table, Michèle and Christian welcome you for a horseback experience in the wild over a week-end.

Discovering the Lyons forest on horseback must be quite the experience. Please tell us!

Extraordinary and unique sensations: a oneness of nature, the forest, the horse... Everything else disappears. Adrenaline picks you up, empties your minds, and you leave your daily problems behind... All this connected with a living creature: the horse. It takes you into this timeless world. Disconnect fully from your daily life!

How is the equestrian experience at the *Écurie de la forêt de Lyons* different?

It is an all-inclusive weekend of immersion for 3 days and 2 nights. We welcome 6 horse riders for the weekend both for the comfort and safety of our guests. They are welcomed as friends, and we expect them to understand the horse-animal they are paired with so that they establish a true relationship with it.

In addition to this package, we also offer beginner experiences in smaller groups (1 to 2 horse riders), as well as senior back in the saddle/preparation for the outdoors.

All our offers are designed as bespoke private experiences. This is a unique approach in Normandy.

What is your favorite place in the Lyons Andelle area?

Michèle: My crush is what is unknown, anything which has to be sought, hidden or even secret wonders. A former hunting ground for the kings of France, the territory has plenty, such as the village of Lyons-la-Forêt and its mysterious past.

Christian: I believe it is the Vascœuil castle for the cultural offer proposed today, especially its history. I also admire the will, the determination, the investment of its owners, as well as the work of the artisans who helped in revealing this beautiful heritage.

Écurie de la Forêt de Lyons
49 rue des Ventes - 76220 La Feuillie
+33 (0)6 09 23 48 55
www.ecuriedelaforetdelyons.com



... others prefer to go off-road!

Though Lyons Andelle knows how to be gentle, it can also be lively and vibrant. Like an endless playground, discover our territory with fresh eyes: by bike to cross its hikes with new sensations, on horseback to reconnect with the essentials...

In Lyons Andelle, give yourself over to the unexpected!

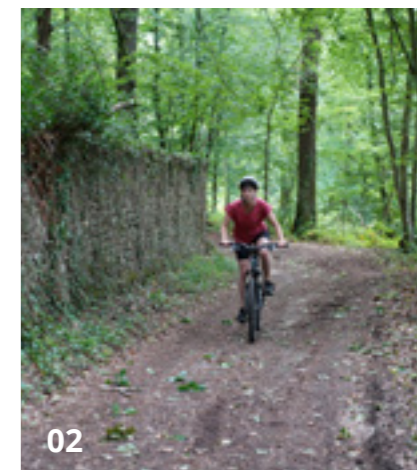


Explore the Lyons forest ©ADT27, P. Beltrami

OUR HIKES



01



02



03



04



05

01 Explore as a family

Sentier de la Fontaineresse - 6.5 km
Start: La Poste parking area, Lyons-la-Forêt

Discover Lyons-la-Forêt and its surroundings at the heart of the countryside. This family hike features many points of view on one of the Most Beautiful Villages in France.

02 One day on a mountain bike

Bois de Bacqueville - 24 km
Start: festival hall, Radepont

Charleval, Fleury-sur-Andelle, Val d'Orger, Ménesqueville, Radepont, Rosay-sur-Lieure, Vandrimare, it is the longest hike in the territory. Although it can be done on foot, you will appreciate it better with a mountain bike.

03 For history enthusiasts

Sentier du Bois de Bonnemare - 10 km
Start: festival hall, Radepont

It is the hike that probably includes the most surprises: Chateau de Bonnemare, Abbey Notre-Dame de Fontaine-Guérard, Filature Levavasseur textile mill... Appreciate these beauties nestled in the Andelle Valley.

04 For Sunday walkers

Fontaine Bulant path - 8.5 km
Start: cemetery parking area, Charleval

Between valley and forest, this hike is ideal for disconnecting in the heart of nature. In spring, purple hyacinth beds offer a unique forest landscape.

05 In the forest for seasoned hikers

Fouillebroc path - 19.5 km
Start: Veneurs intersection, Lyons-la-Forêt

This sporty hike will unveil the most beautiful sites in the Lyons forest: Abbey of Mortemer, Arboretum of Lyons... A route through which you will discover the history of the territory, in full nature.

OUTDOOR ACTIVITIES

On foot

Participate in a Nordic walking session and discover the Lyons Andelle landscapes in good company.

D-Foulées
27380 Vandrimare
+33 (0)6 18 66 41 98
www.d-foulees.com



Well-being session

Breathe in, breathe out and reconnect with the basics. At the heart of the Lyons arboretum or in the greenery, recover the sensations of your body in movement.

Le Mouvement en Soi
Gi Gong session with Catherine Custot
+33 (0)6 81 36 72 34
www.mouveos.fr



Norman Experience: a week-end at the stables of the forest of Lyons © Marie-Anais Thierry

On bicycle

With family or friends, discover the area by bike. Be it the 'véloroute des légendes' ...connecting the Norman Vexin district to the Seine, or one of our 10 hiking paths accessible with a mountain bike, choose new sensations during your stay.

Ride the roads of Lyons Andelle effortlessly with electrical assistance bicycles from:

Loc e Vélo
15 place Benserade - 27480 Lyons-la-Forêt
+33 (0)2 77 13 14 63 / +33 (0)6 30 01 21 49
loc-e-velo.business.site



On horseback

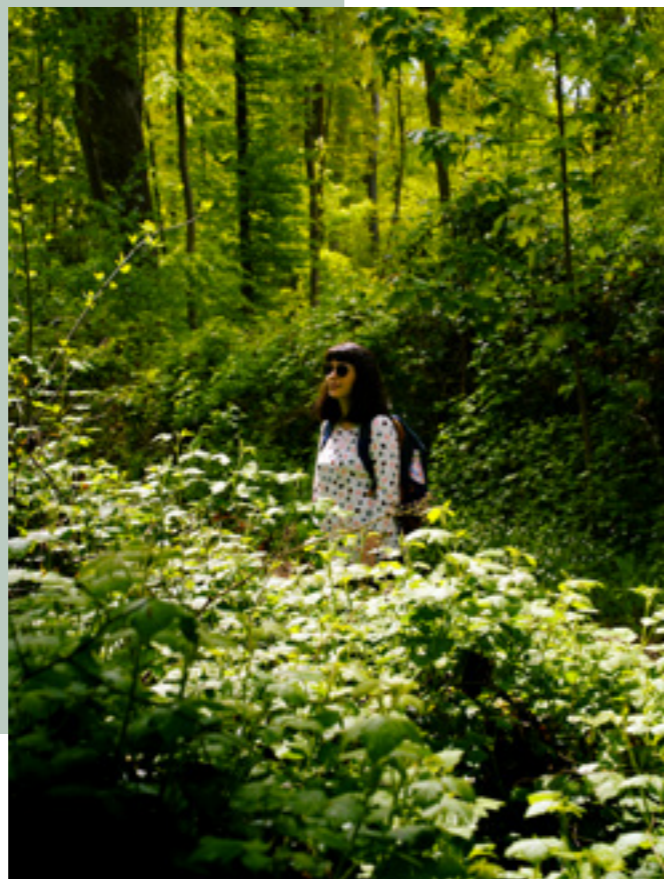
Many stables are available for horseback riding. Whether you are a beginner or a seasoned rider, discover the area in a different way.

Domaine de Lorleau
21 rue de la Lieure - 27480 Lorleau
+33 (0)2 32 49 73 94 / +33 (0)6 60 04 93 22
www.domainedelorleau.com

Ecurie de la forêt de Lyons
48 rue des Ventes - 76220 La Feuillie
+33 (0)6 09 23 48 55
www.ecuriedelaforetdelyons.com

Centre de tourisme équestre du Val Saint-Pierre
99 le Val Saint-Pierre - 76780 Croisy-sur-Andelle
+33 (0)2 35 61 09 43 / +33 (0)6 80 60 06 41
www.valstpierre76ffe.com

Lyons Andelle green



Arboretum

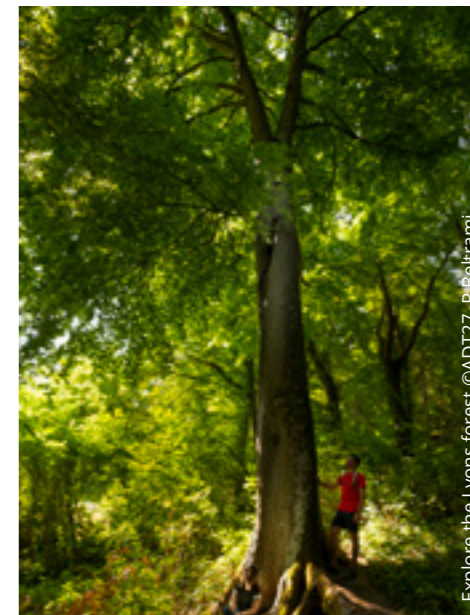
Also known as «Jardin forestier des Bordins», the Arboretum is an invitation to discover more than one hundred species of trees from all over the world. Between 30 min and 1:30, embark on a voyage in a unique 8-hectare site.

Route forestière des Bordins - 27480 Lyons-la-Forêt
+33 (0)2 32 49 31 65



Remarkable trees

Remarkable dimensions due to the age, strange shapes from climatic conditions, variable genetics or mutilations by mankind... The state forest of Lyons is dotted here and there with several remarkable trees. To find out where they are, head to the Lyons Andelle Tourist Office. They will tell you where to find them.



Forêt Royale

The state forest of Lyons hosts remarkable wildlife and used to be the favourite forest of the kings of France and dukes of Normandy. Open your eyes to spot deer, roe deer, wild boars, but also badgers, squirrels or foxes.



Côte des Deux Amants

A panorama located about one hundred metres above the river, a unique view on the river Seine, a Natura 2000 listed and protected site, a unique spot for paragliders and other aerobatics leisure, the Côte des Deux Amants is a must see during your stay.

ACTIVITIES FOR FAMILIES IN THE FOREST

'DO IT YOURSELF'

Making a herbarium

A timeless classic for forest outings. As a souvenir of your hikes, introduce your children to the different species of trees, start a herbarium which they can feed throughout time.

Building a cabin

The cabin, an all-time favourite of children and adults. Whether a tepee or a 5-star accommodation, let your creativity loose, safely.

Initiation to Land-Art

When visiting a forest, children like picking up leaves, stones and sticks. How about building a giant mandala with your harvest before leaving? A unique work of art which will enchant the next hikers.

A treasure hunt

An imaginary universe, the forest becomes a place where everything is possible. Animal tracks, purple flowers, birds, moss, ferns... By observing around them, children must find distinctive elements of the forest.

Go on a 'clean walk'

There is no age to build awareness and participate in cleaning our environment. In the forest, as on the beach, it is easy to pick minor waste to clean the forest. Before leaving on a hike, take a bag and gloves for your 'clean walk'.

Go ahead into geocaching

Do you like escape games? Geocaching is for you! Log on to dedicated sites and search for geolocalized clues left by the community.



© Aurélie Talbot



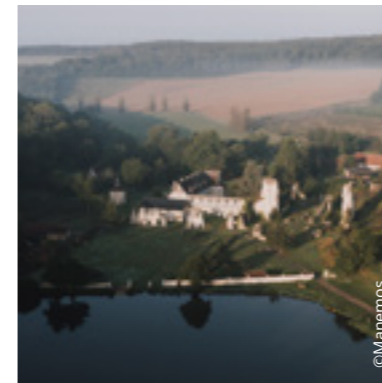
Tourist map in the forest

It is a vital essential for hiking in the forest. The tourist map presents the obvious places of the forest on its verso. Inside, find the remarkable trees, each unique in its aspect drawn over the years. Identify the hiking route at the heart of the forest. This document indicates the hiking starting points, forest parking areas, but also picnic tables where you can relax during your hike.

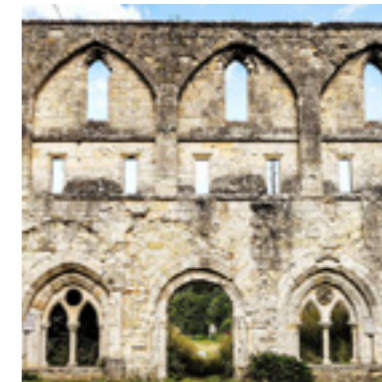
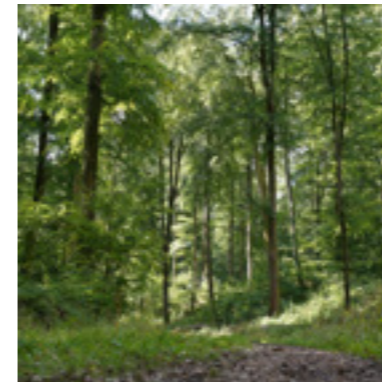
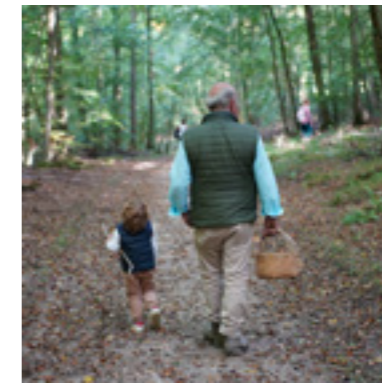
Available free of charge at the Tourist Office in the printed version, or directly on your telephone by scanning the QR code.



#LYONSANDELLETOURISME



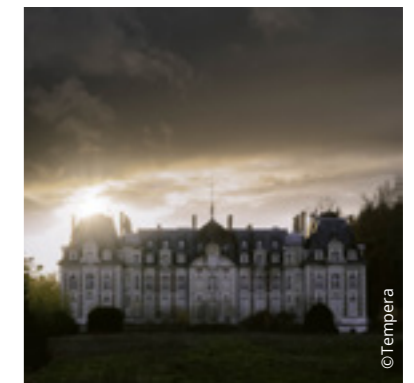
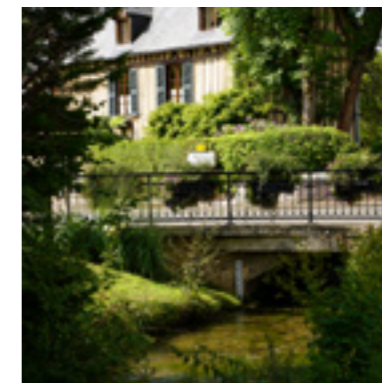
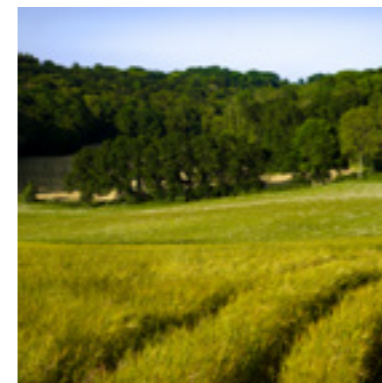
© Manemos



© Anonico76



© @la_pitite_vie_d_aure/Aurélie Mell Lacain



© Tempéra



The Tourist Office Lyons Andelle



The Tourist Office welcomes you all year round in Lyons-la-Forêt!

Our opening hours:

April, May, June & September:

From Tuesday through Friday: 10-12 a.m. & 1-5 p.m.
Saturday: 9:30-12 a.m. & 1-5 p.m.
Sunday and public holidays: 9:30-12 a.m. & 1-4 p.m.
Closed on Monday

July & August:

From Monday through Sunday and public holidays: 9:30 a.m. - 5:30 p.m. without interruption

October to March:

From Tuesday through Friday: 1 a.m. - 5 p.m.
Saturday: 10-12 a.m. & 1-5 p.m.
Sunday: 10 a.m. - 1 p.m.
Closed on Mondays & public holidays

Winter and autumn school holidays:

From Tuesday through Friday: 10-12 a.m. & 1-5 p.m.
Saturday: 10-12 a.m. & 1-5 p.m.
Sunday and public holidays: 10-12 a.m. & 1-4 p.m.
Closed on Monday



Services & shop

Our team is available to provide you with advice and services during your stay:

- Get new ideas and information about the events held during your stay.
- Selection of accommodation, recommendations of restaurants, ideas of activities... Our advisors will help you with your plans.
- Our shop offers local produce, gifts, books and postcards...
- Discover our guided tours and excursions.
- A touchpad with web access can be made available for your searches.



Guided tours and workshops

Guided tours, paper chase, hikes or thematic market, the Tourist Office offers entertainment throughout the year to enrich your stay.

Guided tours and excursions for groups:

Want to discover Lyons Andelle in a group? Speak with our team who will be able to make you an offer based on your areas of interest and prepare a stay that meets your expectations and those of your group.



Practical information



Parking at Lyons-la-Forêt is free.
Cars can be parked in a large parking area located rue de Besguay, 200m from the covered market.



Fleury-sur-Andelle:
Town hall parking area

Lyons-la-Forêt:
rue du Four à Chaux

Romilly-sur-Andelle:
Intermarché parking area

Vascoeuil:
train station parking area

Fleury-la-Forêt:
place de l'église

Charleval:
place de la mairie
rue des Quatre Chemins
(fast terminal)



Charleval:
+33 (0)6 79 97 06 58
+33 (0)2 32 49 17 92

Fleury-sur-Andelle:
+33 (0)6 73 32 00 82

Perriers-sur-Andelle:
+33 (0)6 52 42 15 12

Perriers-sur-Andelle:
+33 (0)6 77 00 49 11

Pont-Saint-Pierre:
+33 (0)6 80 28 77 44
+33 (0)2 32 49 26 39

Lyons-la-Forêt:
+33 (0)6 12 27 92 40
+33 (0)2 32 49 64 81

Radepont:
+33 (0)6 09 40 76 97

Romilly-sur-Andelle:
+33 (0)6 07 77 13 69



A motorhome parking area is available in Lyons-la-Forêt, rue Saint-Paul.

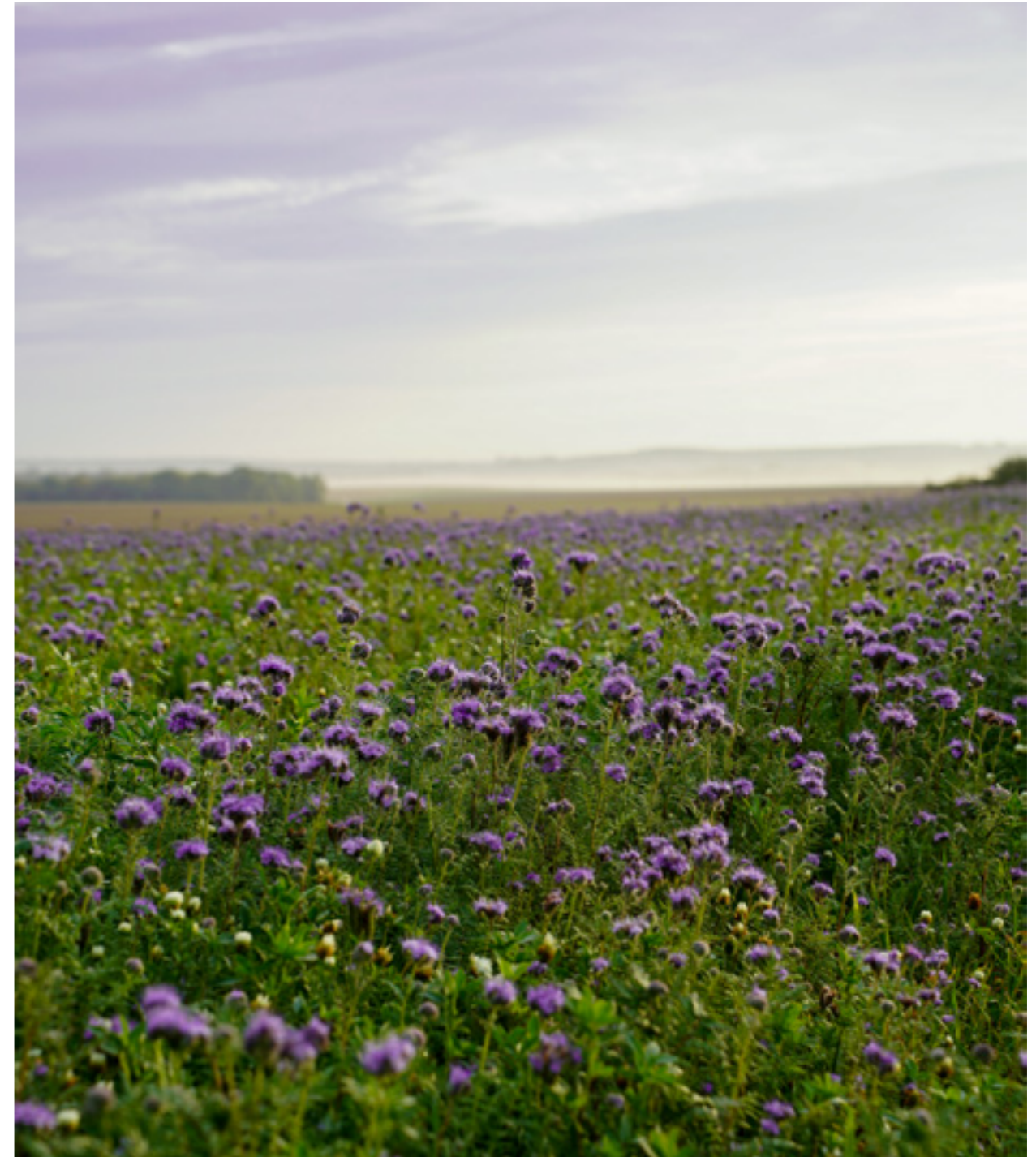
PROPERTY IN LYONS ANDELLE

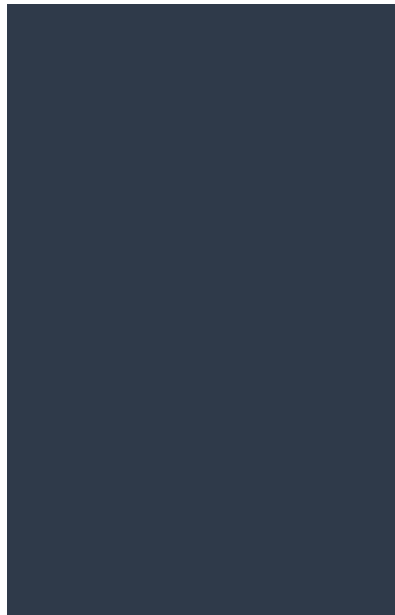
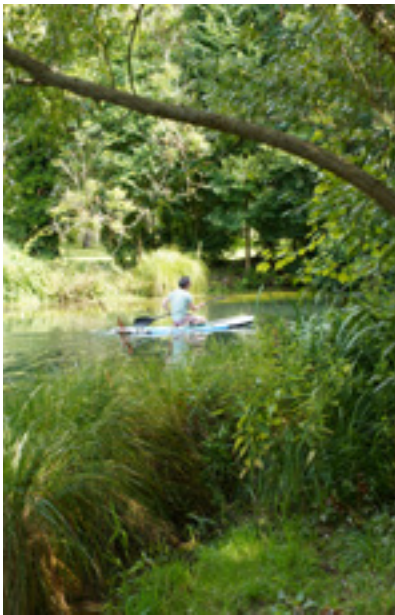
Had a crush for the region? And what if you decided to settle down here! The Armelle Immo real estate agency will help you in your home project, whether for a principal residence or a holiday home. And if you buy for tourist rental, the Conciergerie de l'Andelle will be there to help you manage your rental.

Armelle Immo
20 place Benserade - 27480 Lyons-la-Forêt
+33(0)2 32 48 01 65 / www.armelimo.fr

Conciergerie de l'Andelle
27380 Fleury-sur-Andelle
+33(0)6 14 63 84 09 / www.conciergerieandelle.fr

#LYONSANDELLETOURISME





25 bis place Benserade
27480 LYONS-LA-FORÊT
+33 (0)2 32 49 31 65

✉ info@lyons-andelle-tourisme.com

🌐 www.lyons-andelle-tourisme.com

📷 [lyonsandelletourisme](https://www.instagram.com/lyonsandelletourisme)

📌 Office de tourisme Lyons Andelle

